



# Shenley Brook End & Tattenhoe Community News

The official source of Parish Council news & information for residents of Emerson Valley, Furzton, Kingsmead, Shenley Brook End, Shenley Lodge, Tattenhoe, Tattenhoe Park & Westcroft.



**A Merry Christmas and a Happy and  
Peaceful New Year to all our Readers**



## Welcome to Our 50th Edition

The first edition of what was then The Parish News was published in May 1996. The publication went from an A5 format for the first 6 editions to A4, all of course in single colour.

It was not until Issue 25 in Autumn 2005 that colour made an appearance and then only a few pages.

In 2007 the magazine won the 'Best Parish Newsletter in Milton Keynes' much to the delight of the then editor John Napper.

Edition 36 in the summer of 2008 reported the Parish's success in blocking the widely criticised design for the development of Kingsmead South.

Edition 38 saw the first full colour edition and in the summer of 2009, after a good deal of discussion the name was changed and edition 40 became Community News.

The format, appearance and name may have changed in the

last 15 years but the essence of the publication, to keep residents in touch with Parish matters and report local events, is still very much the same.

It is significant that in this 50th issue we report the introduction of newer forms of communication in Facebook and YouTube which we hope will encourage a wider interest in what happens within the Parish and develop a greater sense of community.

Unfortunately, due to the various re-locations of the Parish office over the years, archive copies of the Newsletter have been lost. However, thanks to David White, a past Clerk to the Council who had kept a complete set (except for Edition 8) we have now taken digital copies and in the near future we hope to be able to put these on our website as a permanent record.

***If you just happen to have a copy of Edition 8 we would love to borrow it and scan it to complete the set!***



## In this issue

- |   |  |   |
|---|--|---|
| 2. <b>Who's Who?</b><br><i>Councillor lineup.</i>                                 | 7. <b>P&amp;E Report.</b>                                      | 13. <b>Weather Report.</b><br><b>Planning Advice.</b><br><b>Community Engagement.</b> |
| 3. <b>Chairman's Column.</b><br><b>Meeting dates.</b>                             | 8. <b>Holiday Club Fun.</b><br><b>Nativity Play!</b>           | 14. <b>Community Centre Info.</b>   |
| 4. <b>Community Committee</b><br><b>Report.</b><br><b>New Parish Councillors.</b> | 9. <b>SBE School Expedition.</b>                               | 15. <b>What's On.</b>   |
| 5. <b>Success for Carole!</b>   | 10. <b>Gardening with Ginnie.</b>                              | 16. <b>Howe Park School</b><br><b>10 years old.</b><br><b>Howe Park NAG</b>           |
| 6. <b>Wardens on YouTube.</b>   | 11. <b>Youth Team Report.</b><br><b>New Youth Team Member.</b> |   |
|   | 12. <b>Long Meadow Goes Green.</b>                             |   |

# Shenley Brook End & Tattenhoe Parish Councillors and Officers are:

## EMERSON VALLEY NORTH



**David Edmonds**  
Chairman  
Community Committee.  
Policy & Finance  
Committee.

## EMERSON VALLEY NORTH



**Vacancy**

## EMERSON VALLEY SOUTH



**Delphine Wolfe**  
Community  
Committee.

## FURZTON NORTH



**Chris Williams**  
Community  
Committee.

## FURZTON NORTH



**Kevin Geaney**  
Planning &  
Environment  
Committee.

## FURZTON SOUTH



**Maggie Geaney**  
Community Committee.  
Policy & Finance  
Committee.

## FURZTON SOUTH



**Charlie Osler**  
Policy & Finance  
Committee.

## KINGSMEAD



**Keith Thomas**  
Web Master.  
Chairman,  
Planning & Environment  
Committee.  
Policy & Finance  
Committee.

## SHENLEY BROOK END



**Nicolas Vidamour**  
Community Committee.  
Policy & Finance  
Committee.

## SHENLEY BROOK END



**Dave Sanders**  
Community Committee.  
Planning & Environment  
Committee.  
Policy & Finance  
Committee.

## SHENLEY LODGE



**David Livingstone**  
Chairman,  
Parish Council.  
Community Committee.  
Planning & Environment  
Committee.  
Chairman,  
Policy & Finance Committee.

## SHENLEY LODGE



**Roy Verman**  
Community Committee.  
Planning & Environment  
Committee.  
Policy & Finance  
Committee.

## TATTENHOE



**Jean Nicholas**  
Vice-Chair, Parish  
Council.  
Community Committee.  
Planning & Environment  
Committee.  
Policy & Finance  
Committee.

## TATTENHOE



**Michele Chapman**  
Community Committee.  
Planning & Environment  
Committee.

## WESTCROFT



**Michael Cato**  
Planning & Environment  
Committee.  
Policy & Finance  
Committee.



**Bill Dawson**  
Clerk



**Carole McMillan**  
Deputy Clerk



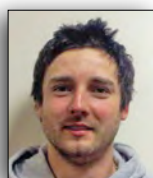
**Rebecca  
Zimmerman**  
Administrator



**Andy Ridgway**  
Youth Leader



**Karen Wheeler**  
Youth Worker



**Matt Jarvis**  
Youth Worker



**Karl Digby**  
Youth Worker



**Alex Gowan**  
Youth Worker



**Mark Webber**  
Parish Warden



**Simon Wells**  
Assistant Warden

For advertising details, contact the clerk on **01908 521538**. To contribute to the Community News, please write to:-  
**The Clerk, Shenley Brook End & Tattenhoe Parish Council, 6 Wimborne Crescent, Westcroft District Centre Milton Keynes MK4 4DE.**

You can email us at:- [clerk@shenleybrookend-pc.gov.uk](mailto:clerk@shenleybrookend-pc.gov.uk) and visit our website at:- [www.shenleybrookend-pc.gov.uk](http://www.shenleybrookend-pc.gov.uk)

Shenley Brook End & Tattenhoe Parish Council does not endorse any goods or services advertised in the Community News or subscribe to, or endorse any political party.

**FINAL COPY DATE: February 6th 2012 - Anything received after this date may not be accepted for the next issue**

## CHAIRMAN'S COLUMN

As I have reported in previous editions of Community News, your Parish Council continues to engage with Milton Keynes Council (MKC) on the subject of devolving certain services to us, under the Localism powers which have recently passed through Parliament.



The difficulty we have is identifying those services that we believe we can provide more efficiently, and at less cost, than MKC. We have asked for a 'shopping list' of services that MKC would be prepared to offer us, together with some indication as to what funding MKC would be prepared to provide us with.

Discussions continue. Your Parish Council must be satisfied that any new services that it takes over from MKC will not result in increased costs, which will ultimately be borne by residents.

Residents may recall me reporting on the future of Westcroft day nursery, which is currently owned and operated by MKC, who are seeking to dispose of this facility, amongst others in the borough.

Representatives of your Parish Council have attended many meetings to make our case to facilitate taking over this valuable community asset, and run it on a 'not for profit' basis. We have submitted a detailed bid, and presented our proposition at both a Select Committee and full Cabinet of MKC.

We are now required to submit a further detailed document covering a wide range of additional information to support our initial bid. We hope to be in a position to have this document ready early in December, and hopefully this will bring this matter to a successful conclusion.

On a positive note, we have been advised that Westcroft day nursery will not close. The only question to be resolved is who will take it over and operate it?

I hope to be able to report in more detail in the next edition of Community News.

David Livingstone  
Parish Council Chairman

### Parish Council Meetings

Meetings of the full Parish Council and its committees are held each month on Mondays at 7:15 pm. at  
Parish Office, 6 Wimborne Crescent, Westcroft (opposite Westfriers).

#### Full Parish Council

Dec 19th	Jan 30th	Feb 27th	Mar 26th
----------	----------	----------	----------

#### Community Committee

Dec 12th	Jan 16th	Feb 13th	Mar 12th
----------	----------	----------	----------

#### Planning & Environment Committee

Dec 5th	Jan 9th	Feb 6th	Mar 5th
---------	---------	---------	---------

Members of the public are welcome at any of these meetings.

If you wish to attend, just turn up but you may wish to contact the Clerk on 01908 521538 beforehand to check that there have not been any changes.



### Can We Help You?

Grants are available from the Parish Council.

**Any group, society, play-group, or charitable organisation in the Parish, or benefiting residents of the Parish, may apply for a grant from the Parish Council. If you can show us that the grant will be put to good use, we are only too pleased to help.**

We will also provide space in the **Community News** to publicise the work of organisations receiving grants. We can include articles from any organisation that benefits the community, irrespective of grant applications. Shenley Brook End & Tattenhoe Parish Council is willing to publicise anything that helps local residents, so please let us know about it.

Contact the clerk by email, telephone or letter. Details at the foot of page 2.

#### Ward Councillors

##### Emerson Valley Ward

Stuart Burke (Lib Dem)  
Edith Bald (Conservative)  
Gerald Small (Conservative)

##### Furzton Ward

Jenni Ferrans (Lib Dem)  
Chris Williams (Lib Dem)

*Member of Parliament for Milton Keynes South*

**Iain Stewart MP**

Community Information Centre:

**Central Library** Tel: 01908 254050

#### Advertising Rates

Full Page	£150
Half Page (landscape)	£75
Quarter Page (portrait)	£40
'Business card' (90mmx50mm approx)	£15



# Two New Parish Councillors

Salut! My name is Delphine Wolfe and I have recently joined the Parish Council representing Emerson Valley South.



I have lived in the Parish for 12 years with my husband and two children. I originally come from France and after my studies I moved to Milton Keynes, which I have grown to love.

Through my job I am involved in engaging with businesses and communities about energy issues; I'm passionate about protecting the environment and my mission is to help people make better environmental choices so that together we can reduce our impact on our planet and save money too!

As a Parish Councillor, my aim is to provide a link between the community and the Parish Council to raise any issues that may arise and take care of the safety and welfare of the residents as well as our environment. Please do not hesitate to contact me should you wish to discuss anything.

My name is Michael Cato and I am the new Parish Councillor representing Westcroft.



I have lived in Milton Keynes with my wife Linda for the last 20 years, 19 of which have been in Furzton North. We have two grown up daughters, both of whom are married and one lovely grand-daughter who has just started school in Shenley Church End.

I currently work for an international Plumbing and Heating Distributor, as a Development Manager covering the UK. I am also involved with Milton Keynes RUFC along with my wife who is their Treasurer.

I am very much looking forward to representing both the businesses and residents of Westcroft and hopefully being able to address any issues to the benefit of all.

It is my aim over the coming months to make contact with as many businesses and community associations as possible.

Should you have any questions or issues you wish to raise to the Parish Council please make contact with me through the Westcroft Office.

## Community Committee Report

Even though finances are tight this year we have a budget of around £16,000 available to support bodies and activities relevant to our area.

In August we were approached by MK Act which provides a refuge for victims of domestic violence and we were delighted to award them nearly £1,000 which will be used for beds, seating and other furniture in their new facility.

In September we awarded over £650 to the Child Bereavement Charity. This money was used towards the costs of purchasing equipment, helping local families to access the group.

If your group, charity or organisation could benefit from a grant please contact our Clerk for an application form.

Another vital role of the committee is Community Engagement. Following the highly successful work done by young people from Oak Hill Secure Training Centre earlier this year at Cropton Rise play area, we are once again looking to engage with these young people, enabling them to make a positive contribution to our area.

Continuing the 'Community Engagement' theme you will see elsewhere in this issue that we have commissioned a video on the work of the Parish Wardens and posted this on YouTube.

It was also agreed that The Parish Council should have a presence on Facebook. This is also up and running thanks to Carole McMillan and we encourage you to visit our page and post your comments and suggestions.

Next year is the Queen's Diamond Jubilee and ideas as to how the Parish may mark the occasion are being considered. If you have any suggestions please let the Clerk know in good time.

David Edmonds

Chair Community Committee

### From the Parish Archives!

**9th April 1921** - The Chairman agreed that the services of Tom Grapel be retained for a further year as lamp post lighter (paraffin) at a salary of £2-10-0d.

**16th February 1922** - Arthur Daniels was elected Parish Constable at a salary of £1 per year and the Parish rate was set at 3d in the £ to cover the cost of village street lighting.

## Clearsight Opticians



- NHS & Private Eye Tests
- All Types of Contact Lenses
- Budget & Designer Frames
- VDU Screening
- Free Frames for Children
- Free Car Parking
- Personal, Friendly & Reliable Service



**'The Mall' Westcroft District Centre  
MK4 4DD**

**01908 504740**

## Congratulations Carole!



Carole McMillan, our Deputy Clerk has achieved the Clerks qualification, (Cilca) Certificate in Local Council Administration in record time. This is normally a two year course but Carole, always one to put 110% into everything, accomplished this in half the time which is an amazing feat. Not only that, but she also found the time to complete a course in 'Working with Your Council' and was awarded a Certificate of Achievement. How does she do it!

Carole is seen here being congratulated by David Livingstone and Jean Nicholas Chairman and Vice Chair of the Parish Council.

## LEARN TO DIVE

### WITH DIVE HORIZONS

*SCUBA IS AN EXCITING, SAFE & FUN SPORT THAT LETS YOU EXPLORE THE UNDERWATER WORLD!*

- Have a go with a Try Dive and see what it's like in the safety and comfort of a swimming pool.
- Qualify as an Open Water Scuba Diver and get a certificate that's recognised worldwide.
- Learn to dive BEFORE you travel, so you can enjoy more of your holiday.
- Courses are conducted in small groups or even arranged individually to fit in with your lifestyle.
- Vouchers make great presents for Try Dive experiences or other courses.

For more information or for course start dates, call Nick on (01908) - 710166 / 502344 or email [info@divehorizons.co.uk](mailto:info@divehorizons.co.uk)



### Dive Horizons

Shenley Brook End, Milton Keynes

We're on the web, visit us at

[www.divehorizons.co.uk](http://www.divehorizons.co.uk)

## MAKING A WILL

There are strong moral and financial reasons for making a Will. To die without leaving a Will leaves loved ones in an uncertain and stressful position. If you don't have a valid Will the Law will decide who inherits and this is unlikely to be what you want for your partner or children. The survivor of an unmarried couple will be entitled to nothing and may lose the home where they lived.

Everyone believes making a Will is difficult. However with expert advice, counseling and guidance making a Will is not expensive, difficult, stressful or emotional and takes about an hour. If you have a Will it should be reviewed every 5 years.

The inner warmth and contentment felt by many of our clients who have planned ahead and tied up all their loose ends is without comparison. If you are over 18 whatever your circumstances it is sensible to make a Will. You should plan to pass on to your partner and/or children and/or others as much of your hard earned assets as you can. Don't forget if your parents don't have a valid up to date Will it's your inheritance that is at stake. We can help you all.

We can also help the elderly, vulnerable and disabled by providing powers of attorney enabling them to appoint someone else to deal with their affairs if and when they can't.

Call Ashley at Simply Wills your local Professional Will Writer for information, advice and to make an appointment for your no obligation consultation. Visit us at [www.simplywills.org](http://www.simplywills.org).



### Helping to put your affairs in order

- Making a Will
- Inheritance tax planning
- Protecting property against the costs of long term care and remarriage
- Providing for children and the disabled
- Powers of Attorney and Living Wills
- Pre paid Funeral Plans
- Probate and Deeds of Variation

*Free no obligation consultation in the comfort of your home at a time to suit you*

For more information

**Call 01908 866541 anytime**

Members of the Society of Will Writers  
...providing affordable peace of mind



## Wardens on the Web!

You may see us on a day to day basis around the Parish but now you can also see us on **YouTube!**

We recently starred in a video for the Parish Council; a short movie highlighting some of our work around the Parish. You can find the link on our website at:

[www.shenleybrookend-pc.gov.uk](http://www.shenleybrookend-pc.gov.uk);  
take a look and let us know what you think!



Meanwhile we continue to deal with various issues such as fly tipping, litter, broken glass, graffiti and bin bags put out too early or on the wrong day. Some of these we find as we patrol the Parish and some are reported by residents. We also continue to work with the PCSO's on parking issues.

You may also have seen us out in the Parish cleaning street name signs. This is something that we felt would help make the estates look smarter as some of the signs were so dirty you couldn't even read the names of the streets. Damaged or missing signs have been reported to Milton Keynes Council and hopefully will be fixed or replaced in the coming months.

Please feel free to contact either of us if you find anything that you feel we may be able to deal with around the Parish.

Mark Webber: 07970902357 [warden@shenleybrookend-pc.gov.uk](mailto:warden@shenleybrookend-pc.gov.uk)

Simon Wells: 07792480899 [simon.wells@shenleybrookend-pc.gov.uk](mailto:simon.wells@shenleybrookend-pc.gov.uk)

### Reiki@Home

Experience this gentle, non-evasive energy therapy in the comfort of your own home.

Reiki helps to support you physically and mentally, and can be used for a wide variety of symptoms and conditions.

*Pain Relief*

*Seasonal Affective Disorder (SAD)*

*Stress, Anxiety, and Depression*

*Migraines and Headaches*

*Enhances medication and reduces side affects*

*Helps to accelerate healing post-surgery*

*Pre and Postnatal pain management*

*Insomnia*

For more details on Reiki, counselling, and how I can help you, please contact me using the details below. Clinic appointments are also available.

Website: [www.jenhackercounselling.com](http://www.jenhackercounselling.com)

Email: [jenhackercounselling@gmail.com](mailto:jenhackercounselling@gmail.com)

Tel: 07506 686819

### Emerson Valley Playgroup The Wendy House Learning through play



This is an established pre-school setting for children aged 2½ to 5 years, which encourages independence and prepares children for school

#### PLAYGROUP SESSIONS:

Mon 9.00am to 12.00pm & 12.30pm to 3.30pm  
Tues 9.00am to 12.00pm & 12.30pm to 3.30pm  
Wed 9.00am to 12.00pm & 12.30pm to 3.30pm  
Thurs 9.00am to 12.00pm & 12.30pm to 3.30pm  
Fri 9.00am to 12.00pm

We are registered for "all day" care and all day sessions are provided.

For more information or to arrange a visit, please call: 01908 506982 or 01908 502100

Emerson Valley Playgroup  
6 White Horse Drive  
Emerson Valley, MK4 2DH

Registered Charity No: 1056709



**The Child Bereavement Charity** would like to extend its very grateful thanks to Shenley Brook End and

Tattenhoe Parish Council for the grant that they have recently awarded us to support our children's groups.

This money will enable us to purchase the equipment and resources we need to run groups to support bereaved children aged 5-11 years and their families who live in the Milton Keynes area. Children attending previous groups have said "It has helped me a lot", "I loved it" and "I didn't want to leave".

The Child Bereavement Charity supports children and families when a child has died and when a child is bereaved through our national helpline and website, with direct individual, family and group support and via our extensive professional training programme.

[www.childbereavement.org.uk](http://www.childbereavement.org.uk)

Tel: 01494 568900  
(helpline open 9am-5pm, Monday-Friday)

Katie Koehler



## The Power of Solar Energy

Earn a tax free income - index linked for 25 years  
Save on your energy bills  
Reduce your carbon footprint

For your free 'no obligation' survey  
Contact [mike@nattech.co.uk](mailto:mike@nattech.co.uk) or call 07711 797877



Natural Energy Technologies Ltd is a specialist in renewable energy technologies - experts in solar panels



## P.J.L Painting & Decorating



Interior & exterior  
Wallpaper stripping  
Door & woodwork painting,  
staining & varnishing  
Staircase decoration  
Wallpaper hanging  
Experienced in insurance work

- Fully qualified
- Fully Insured
- CSCS qualified
- References upon request
- Strict policy ensuring total protection of your furniture, fixtures & floors
- Free quotes & advice

Contact Peter Lewis on

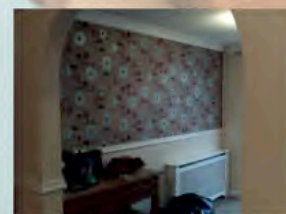


**01908 504047**

**07921134212**

or visit

[www.pjlpaintinganddecorating.co.uk](http://www.pjlpaintinganddecorating.co.uk)



## Planning & Environment Committee Report

As you will see elsewhere in this issue we have commissioned a new video on the work of our Parish Wardens. We would encourage you to check out the YouTube link on our website: [www.shenleybrookend-pc.gov.uk](http://www.shenleybrookend-pc.gov.uk) to see what a splendid job they do around the Parish. We would appreciate your feedback on this video and whether you would like to see other aspects of Parish activity shown this way.

The new allotment year began in October and the revised Terms & Conditions mentioned in the last issue were sent out with invoices during September. Allotment holders were required to sign and return a copy of the new agreement as an acknowledgement of their acceptance. The majority of tenants have already signed up to these but reminder letters are being sent to others reminding them that they might otherwise forfeit their tenancy.

A recent issue has highlighted the fact that the Parish Council's part in the planning process may not be fully understood by residents. It was felt it might be useful therefore to summarise the procedures and where we fit into the process. We hope you will find the details set out on page 13 of this issue helpful. We also intend to post this information on our website in due course.

Keith Thomas

Planning & Environment Committee Chairman



## Mission Rescue Holiday Club

"Security level- tardis blue! Stay alert agents! We are getting reports from our contacts that God's people are in trouble. Your mission, should you choose to accept it, is to discover and recover the plans for the rescue."



So started the week of spy rings, secret codes, and unlikely undercover agents, as 50 junior agents gathered with their spymasters to unravel the plans for the rescue of the Israelites from their captivity in Egypt.

The hall at Christ the Sower was once again transformed; this time into a network of spy rings controlled by the main Spy Hub, complete with an array of computer equipment, and information and communication devices.

Each day the young agents would gather in their rings to discuss the previous day's information and undertake some deciphering activity. When all the agents were accounted for, they were summoned to the Hub by the Spy Chief first for a fitness workout in true James Bond style, then to sing the rallying song 'Mission Rescue'. The arrival of the day's security report was brought by Parrot, flying, occasionally backwards, from the rafters. The deciphering of this led into the day's story episode.



During the five days, the agents learned how Moses was many times rescued in order that he might fulfil his mission. The agents learned how God's rescue mission has evolved over the last three thousand years and is still going on today. Following each episode, the spies regrouped in their rings to

discuss the story and to practice their skills in related espionage.

All spies need refreshment, and so half way through the morning a healthy snack of fruit, a drink and some biscuits was downed before the next call to action – this time to go in groups either to the Spy Creativity Block or the Spy Games Centre. While some spies were busy making large black spectacles or Moses baskets or encoding messages to be hidden in innocent looking tortillas, the other group was out on the field running against the opposition in disguises, or doing something challenging with water and plastic balls.

The spy rings re-grouped in the hall for exciting team building activities, often involving creative uses of foaming cream or balloons. These were enjoyed as much by the adults as the children. Then came the next crazy episode in the drama 'Who's the Mole?'; followed by some obscure jokes and messages that had been mysteriously dropped in the Red Dead Letter Drop Box. The day ended with an energetic reflection on the day's memory verse and a collective prayer before the spy agents returned home.



Nothing daunted after their week of intensive espionage, many spies and their accomplices, leaders and friends gathered together on the Sunday to recount the activities of the week in a service of joyful, thankful celebration.

The Watling Valley Ecumenical Partnership would like to thank the leaders, and especially the Spy Master, Mike Morris for all their initiatives and hard work; and to our generous sponsors the Shenley Brook End and Tattenhoe Parish Council for their interest and financial contribution to the Holiday Club.

## 'Nativity Play'

*From Shirley Valentine by Willy Russell*

It was the evenin' of the school Nativity play an' it was lovely, y'know all the little angels come on an' they all have a sly little wave to their mams. Then it was our Brian's entrance; he comes on an' he's pullin' this donkey behind him - it's like this hobby-horse on wheels. An' perched on top of it is this little girl, takin' the part of the Virgin Mary an' she's dressed beautiful, y'know, her mother's really dolled her up to be the part. Well, Brian gets to the door of the inn and he goes 'Knock, knock, knock' an' the little Innkeeper appears. Our Brian starts 'We are weary travellers on our way to Bethlehem an' my wife is havin' a baby an' we need to rest for the night at the inn.' So the little feller playin' the Innkeeper pipes up: 'You cannot stay at the inn because the inn is full up an' there is no room in the inn.' An' then our Brian is supposed to say somethin' like: 'Well, we must go an' find a lowly cattle shed an' stay in there' Then he's supposed to go off pullin' the donkey an' the Virgin Mary behind him. But he didn't. Well, I don't know if it's the Virgin Mary gettin' up our Brian's nose, because she's spent the whole scene wavin' to her mother, or whether it was just that our Brian suddenly realised that the part of Joseph wasn't as big as it had been cracked up to be. But whatever it was, instead of goin' off pullin' the donkey he suddenly turned to the little Innkeeper an' yelled at him: 'Full up? Full up? But we booked!' Well, the poor little Innkeeper didn't know what day of the week it was. He's lookin' all round the hall for someone to rescue him an' his bottom lip's beginnin' to tremble an' our Brian's goin', 'Full up? I've got the wife outside, waitin' with the donkey She's expectin' a baby any minute now, there's snow every-where in six-foot drifts an' you're tryin' to tell me that you're full up?' The little Innkeepers lip is goin' ten to the dozen an' the Virgin Mary's in floods of tears on the donkey. Well, the Innkeeper finally grasps that the script is well out of the window an' that he has to do somethin' about our Brian. So he steps forward an' he says, 'Listen mate, listen! I was only jokin'. We have got room really. Y'can come in if y'want.' An' with that the three of them disappeared into the inn. End of nativity play an' end of our Brian's actin' career. Me an' our Brian, we sometimes have a laugh about it now but at the time I could have died of shame. It was all over the papers:

***'Mary And Joseph Fail To Arrive in Bethlehem.'***



# Shenley Brook End School Outlook Expedition 2011

After eighteen months of fund-raising a group of twelve Shenley Brook End School students aged between 16 and 18, two members of staff and a leader from an Expedition Company, travelled to Tanzania. Our physical challenge was to climb Mount Kilimanjaro and then begin a community project at our partner school in Zanzibar, building a new classroom and delivering lessons.

We arrived on 8 July. Two nights in Dar Es Salaam enabled us to acclimatise before travelling to Arusha, a small, busy town, the gateway to Kilimanjaro and the Serengeti.

Over the next three days we climbed to the top of Longido peak with our Masaai guides; hard work, and the students' cooking was somewhat hit and miss! While climbing the Longido, we realised how hard the challenge to climb Mount Kilimanjaro would be but after recovery time in Arusha we set off.

Kilimanjaro is a formidable mountain. At 5895m it is the highest point in Africa. At the top the temperatures are freezing whilst the sun can also punish any unprepared traveller. Our group was well equipped with an excellent team of porters and guides looking after us. The first five days were hard walking with the environment constantly changing. We travelled through a cloud forest, 800 – 2800m, moving through heath and moorland, 2800 – 4000m, progressing through alpine desert, 4000 – 5000m before reaching the ice cap at 5000m.

On the fifth day we woke up at 11:30pm and began the push to the summit. It was freezing, minus 15°C, windy and dark. It took us six and a half hours to reach the top, emotional and exhausted. Nine of our group made it but even for those who didn't, none of us will ever forget our time on the mountain. Two more days of walking, we reached the bottom and returned to Arusha.

We then moved onto the project stage in Zanzibar.

## Zanzibar - Matemwe School Project.

In Zanzibar we were welcomed by Mr Juma (Deputy Headteacher and International Schools Organiser) and Mr Makame, a maths teacher. Arriving at Matemwe we toured the school and were shown to our accommodation.

The Headteacher and Deputy Headteacher (both of whom have previously visited us at Shenley Brook End) welcomed us to their school the next morning. Our students took part in a question and answer session with a group of ninety students. Questions covered a range of topics but mainly focused on our school and teenage life in the UK. Our students then began work on the building project for which both schools have

been fundraising. The aim is to build a new science laboratory/classroom over the next three years.

The following morning around twenty of the Matemwe students worked with our group to dig the foundations. This was a chance for our students to get to know each other and whilst building was underway, teaching staff met again to discuss how they would like the partnership to progress.

After lunch we visited the local water caves from where the area gains its fresh water supply and asked if there were any problems with shortages or contamination. We all had an interesting afternoon followed by a football match and everybody had a really enjoyable time with many students coming to watch.

The next morning at school our students were assigned three classes. They had prepared English lessons and worked in rotation where each group of four had a half hour lesson taught three times, each time to a different class. Our students used a mixture of quizzes, student participation, songs and vocabulary tasks and the Matemwe students really enjoyed being able to participate in some totally new learning styles; something that the Matemwe staff is keen to develop.

Ms Hurrell taught some chemistry and Mr Fuller

introduced the topic of energy consumption and climate change to a group of 50 geography students.

The following day progress was made with the building. The foundations were completed, filled with stone and the building above ground started. After a morning of manual work our students each took five Matemwe students and they sat in groups in the school grounds and talked, focusing on school, family and their own future. At fifteen minute intervals students swapped groups, email addresses were exchanged and communication will be structured to form a pen friend exchange when the internet is up and running in Matemwe.

On our final day staff and students met to discuss the partnership. The Headteacher Mr Hamad and Deputies Mr Juma and Mr Vuai addressed the meeting and spoke of our achievements during our stay. We intend to continue with the projects and, either through fundraising or the successful application of grants we would like to facilitate further staff and student exchanges.

We said goodbye to Matemwe students and staff and headed for three days of rest and relaxation at Nungwi, in the North of the island. There we had time to unwind, relax and reflect on our great visit and life-changing experience.



## Gardening – December 2011

At this time of year I usually sit down with the seed catalogues and based on my successes and failures for the year, decide what to order for next year.

This year has been such a crazy gardening year as the weather has been unusual in every season, so it is impossible to look back with any clarity as what has worked and what has not.

The heat wave in early April with temperatures of 25°C brought the bulbs to a sudden end.

A cold and dry summer followed (at least in our part of the country although not everywhere) so the vegetables grew very slowly and didn't reach their normal maturity in September. Radish and other vegetables that are mainly water went to seed before they were ready to harvest. Despite the occasional rainy day in September it was mostly dry and much colder than expected. At the end of September and through October the prevailing winds swung round from the west to the south and brought us hot weather and warm winds from the Iberian peninsula. We had record temperatures of 29.9°C.

Late October and early November were also much warmer than we would normally expect which fooled the plants completely and in Mid November I had Viburnum, Azalea and pelargonium's blooming, clearly months early as the weather conditions had simulated Spring. Roses which had been kept back by the cold summer showed a wonderful display at least two months late. The plant most fooled by the weather, however, was the clematis 'Mrs George Jackman' in our editor's garden (see photo taken in mid November). This is a summer flowering clematis which according to the nurserymen can occasionally flower into September.



The dry weather in August suited the ants and they built their nests in the bottom of my patio pots. I have now been told by a friend that she lines the inside of her pots before she plants them up with the "thin blue cleaning cloths" available in all supermarkets which stops the ants getting into the pots to lay their eggs. I will try this next year and report back on my results.

The most welcome part of having such a cold dry summer was that we did not have as many slugs and snails to contend with this year so the crops that were produced were not eaten by them.



Indoors I have had a beautiful show of Orchids; mine are Phalaenopsis or 'The Moth Orchid'. There are a lot of myths about keeping orchids and I am afraid I break most of the rules. This may

not work for everyone but although I report them in Orchid bark/compost, I use ordinary plant pots not clear pots as recommended, nor are they in the correct position as they are on the windowsill in my south facing conservatory in full sun for most of the time. They are not supposed to survive in full sun. The pink one in the photo was a Mother's Day present in 2003 and has bloomed each year since then although not with as many blooms as it has this year, it really has been splendid and had already been in bloom for about two months when this photo was taken in mid November.

At this time of year there are a lot of cyclamens bought as houseplants but once they have finished flowering they are thrown out. I have several which I have kept for many years and they come into flower at this time of the year. It's very easy, all you need is a dry place such as a garage to keep them in once the flowers have all died which is usually about May or June depending on the variety and do not water. In August clean all of the old compost off the corm and repot in fresh compost, taking care to place the corm on the surface just slightly bedded into the compost. Water well and put on a windowsill. Shoots will soon start to appear and it should produce flowers from November through to March.

Pitting our wits against nature is all part of gardening and so we look forward to 2012 with stoical good humour wondering what it will offer and enjoying browsing the seed catalogues.

Enjoy your gardening!

*Ginnie*



### PROFESSIONAL DANCE CLASSES

BEGINNERS TO EXPERIENCED PERFORMERS

**CHALLENGE JAZZ**

**FUNKY 'N' FAST**

**WEST END WORKOUT**

**SB LIMBER**

Upbeat and energized dance classes, for different age groups. Classes follow a technique-based approach balanced with professional choreography. Essential for students who want to perform!

Classes are held Thursdays and Saturdays at Shenley Brook End School, Milton Keynes.

#### ADULT JAZZ

For adults who still want to dance and boogie on down. This class covers a range of dance styles and you can strut your stuff each Saturday morning. Learn a variety of choreography and have fun on the dance floor.



**Principal: Suzanne Bushen**  
**Telephone: 07506 870511**  
**Email: [suzanne@sbdanceacademy.co.uk](mailto:suzanne@sbdanceacademy.co.uk)**  
**[www.sbdanceacademy.co.uk](http://www.sbdanceacademy.co.uk)**



## Youth Team in Action

### New youth club opens its doors

For the past two years the Parish Council Youth Team has been offering a session tailored towards the needs of young women. This session started off as a Multi Sports session based at the Shenley Brook End School Gym and last year it moved to the Council office on Westcroft to provide a more relaxed session. In the summer the session closed down for the school holidays and has had trouble attracting members to keep it running. After a long discussion within the Youth Team staff it was decided that we would let the young people decide what we should use this space for on Thursday evenings.

We produced a questionnaire and passed it out to the few members who were still attending and also at our Wednesday youth club session.

The results of this survey showed that the vast majority of those asked thought that the youth club should be opened up to everybody and just run alongside the Wednesday youth club that is already very popular.

With this input in mind we have now taken this advice and made it a part of the Westcroft Youth Club which is now open two nights a week.

So if you want to meet new friends, need a friendly adult ear, want to play some games, take part in some arts, or would just like a warm comfortable space to hang out, why not come along to the Westcroft Youth Club that runs every Wednesday and Thursday 5pm-7pm at the Parish Offices opposite Westfriers Chip Shop.



### Increased sports sessions for the winter

When the weather turns cold and the nights get darker it further reduces the opportunity for young people to get involved in positive fun and healthy sports activity. The Youth Team are doing their best to counter balance this by offering even more free Fun Football sessions on AstroTurf in your Parish. These football sessions are very informal and are more about providing young people with access to the quality facilities, bringing young people together in a safe place, and challenging minor incidents of bad behaviour. It is not an organised coaching session or building up a regular football team.

Having been running AstroTurf football sessions at the Tattenhoe Pavilion for six years now, we are always trying to improve the opportunities for young people to socialise safely and also keep active. These sessions grew when four years ago we added the Shenley Brook End football session every Wednesday night during the winter months (October to April). Now we are offering a fantastic third session so that more young people can gain access to the space and young people can continue to enjoy their Parish all year round.

So if you are a young man and want to come and enjoy a fun game of football or just want to come along and play with your friends, why not check out one of our brilliant, free, and fun football sessions.

**Mondays and Wednesdays at Tattenhoe Pavilion, 5-6pm**

**Wednesday at Shenley Brook End School, 5-6pm**

## Welcome to a New Member of the Youth Team



Hi! I am Karl Digby and I am the newest member of the Parish Youth Team. I have joined the Youth Team predominantly as a sports youth worker supporting and facilitating two of the football sessions that the team offer each week. I also get involved in the regular youth sessions and have already started to meet lots of the young people from the area.

The majority of my work experience is in sales and the sports industry although I have also worked at Gulliver's land and a Pontins holiday camp, which involved contact with younger people. In my spare time I am very active, playing Sunday league football, as well as other sports and also singing at the odd 'open mic' night. I am looking to find a more rewarding job in the future helping to support people and influence their lives. I hope my work with the Parish Council will prove to be very good experience and hopefully the skills I learn will allow me to progress towards this.

## Do you suffer from...

- Aches & Pains ✓
- Injuries ✓
- Migraines ✓
- Weight Gain ✓
- Stress & Tension ✓
- Depression ✓
- Frozen Shoulder ✓
- Illness & Disease ✓
- Addictions ✓



Call **SARAH** for advice - **07810 791 019**

[sarahchambers@tesco.net](mailto:sarahchambers@tesco.net)

**[www.sarahchambers.info](http://www.sarahchambers.info)**

**EFT**

**Injury Treatment**  
**Personalised Nutrition**  
**Reflexology On-Site Therapy**  
**Massage Posture Correction**

**£5 Off**  
 with this  
 advert

## Green School to Branch Out Further

Sustainability has long been a part of every day life at Long Meadow School. Children at the primary school in Shenley Brook End have played an active role in making the school one of the foremost 'green' schools in the country.

The school's Eco-Monitors ensure that resources are used wisely and waste is kept to a minimum. The children are taught the importance of preserving the planet for future generations by being mindful of their actions.



Pupils are enthusiastic and active recyclers, gathering together items such as old shoes, uniform that has been out-grown, batteries, spectacles, old mobile phones, print cartridges, paper, card, plastic, glass, pens (Yes - for every pen we recycle we make 2p for Willen Hospice) and fruit and food waste.

Developing an understanding of the children's role in their local community is also of paramount importance to Long Meadow. Each year our children participate in the 'Big Tidy Up' organised by the Keep Britain Tidy Campaign with children throughout the school gathering bags of litter from around the local area. We have also recently appointed 'Junior NAG's' who work with local Community Wardens and are part of the Neighbourhood Action Group network.

The children have already made significant cuts to their carbon footprint by reducing the amount of electricity they use as well as cutting the heating bill by making sure the doors and windows are kept closed.

Long Meadow School is now ready to take the next step in their sustainable development with the installation of renewable energy in the school grounds. We will soon be submitting plans to place a small microgeneration wind turbine on our school field (don't worry, it is about a fifth of the size of the ones you see in a commercial wind farm) as well as solar panels on our school roof.

The school has worked incredibly hard to gain 100% funding for the project, so none of the money spent on renewables is being diverted away from essentials such as paying for teachers or resources. Once fully functioning, the turbine and the solar panels will not only power some of the school's energy needs, but could also feed electricity back into the National Grid, for which the school will receive an income. Conscious about the environmental impact of a wind turbine, the school has chosen a model that is quiet and is confident that the noise will not have an impact on local people's well being. We have received a site visit from the council's ecologist, who felt that the localisation of the installation was a low risk for bats.

A drop in morning for local residents is planned to take place on Saturday 10<sup>th</sup> December between 10am and 12pm. The school would be delighted to welcome local residents to share



### Shenley Christian Fellowship

*warmly invites you to join our Christmas celebrations.*

#### Sunday, December 18th

10.30-11.30am Pre-school Children's special

2.00 - 3.30pm Messy Christmas for families with children up to the age of ten years

5.00 - 6.00pm Traditional Carol Service

7.00 - 8.00pm Contemporary Christmas Service

#### Christmas Day

10.30 - 11.15am Christmas Day celebration

To discover ore of what we do the rest of the year including drop-in, toddlers' groups, youth activities and regular services, see our website:

[www.scf-mk.org.uk](http://www.scf-mk.org.uk) or phone 01908 524742 (Church Administrator)



Thames Valley Police have gone live with **101**, the new national single non-emergency number, which will replace the 0845 8 505 505 number.

Both numbers will run side-by-side until the end of March, but if demand for the 0845 8 505 505 number drops it may be discontinued earlier.

Calls to **101** from both landlines and mobile networks will cost 15 pence per call, no matter what time of day the call is made, or the duration of the call.

Everyone calling the police for non-emergency matters will now know exactly how much a call will cost them, and can be assured of equal access whether they are on a pay-as-you-go mobile or a home landline.

The routing will be based on the same system as 999 calls which links a caller's dialling code to the police force that covers that geographic area. **101** calls from a landline will be routed to the nearest police force that covers the area's dialling code. If the caller is using a mobile, the call will be routed using the location of the mast that the phone is transmitting from.

If a call is made to **101** within a force area that has not yet 'gone live', the caller will hear a recorded message telling them to redial using the relevant non-emergency number.



## Community Engagement - We Want to Hear from You

Communication with residents is an essential part of our work as Parish Councillors and Staff. The Wardens and Youth Workers are very much the public face of the Parish Council and in addition, through our website [www.shenleybrookend-pc.gov.uk](http://www.shenleybrookend-pc.gov.uk) and Community News we provide news and information on our day-to-day business. We are conscious however that social networking has become a prime means of communication for many and we need to connect with those of you who work this way.



**You Tube** You will see elsewhere in this issue that we have a presence now on YouTube with videos of our

Wardens and Youth Team and have recently established a presence on Facebook which we hope to develop over the next few months.

These ventures will only succeed if they are used as a means of two way communication. We need your input since without it we have no means of knowing whether we are providing the services you really value. So please use these new facilities and let us have your views.



### Living Without Fear

Nobody should have to live in fear of crime and there is a simple, safe and effective way you can help stop criminals ruining more lives by passing on information about crime anonymously to the Crimestoppers 24:7 hotline **0800 555 111** or at [www.crimestoppers-uk.org](http://www.crimestoppers-uk.org).

Crimestoppers is a charity and not part of the police. When you call **0800 555 111**:

- your call will not be traced and you won't be asked for your name or address
- you will always remain completely anonymous, so there is no risk to you
- if your information leads to an arrest and charge you may qualify for a cash reward of up to £1,000 which will be paid out anonymously, so at no point will your identity be revealed.

Crimestoppers really does work. More than 2100 local criminals have been arrested and charged in Thames Valley over the past 13 years. That means that 1 in 10 of the calls to Crimestoppers results in an arrest without one caller ever being identified.

So do you have any information about:

- burglary?
- knife crime?
- car crime and numberplate theft?
- robbery?
- metal theft?
- counterfeiting?
- drug dealers?

Call Crimestoppers anonymously on **0800 555 111** or go to [www.crimestoppers-uk.org](http://www.crimestoppers-uk.org).

**Help make your community safer today.**

**Thames Valley CRIMESTOPPERS**  
**0800 555 111**  
Call anonymously with information about crime

## Planning Applications

All planning applications submitted to Milton Keynes Councils' Development Management Department are available to view online via the Public Access System.

### Commenting on a Planning Application

Once you have viewed an application you may wish to make a comment or representation on the application. You can do this online via the Public Access module. If you do wish to make a comment then we would recommend that you read the article 'What Issues Can a Case Officer Consider?' which can also be found on the Milton Keynes Council website.

The Parish Council receives notification of all planning applications relevant to the Parish and these are considered at the next available meeting of the Planning & Environment Committee.

Comments/objections submitted via the Public Access System may not appear on Milton Keynes Council website for several days; also the timing of notification and meeting dates may not always allow a full 21 days for consideration by the Parish Council Planning & Environment Committee. It is therefore important that comments / objections to a particular application are drawn to the attention of the Parish Council in writing at the earliest opportunity.

All meetings of the Parish Council are open to residents and time is set aside for issues such as planning applications to be raised by

members of the public. Dates are published on our website and in Community News.

Reviews by the Committee are on the basis of strict planning guidelines and whilst there is a good relationship between the Parish Council and Milton Keynes Council, the final decision on any given application lies with them, not the Parish Council.

## Weather Report

It seems the Weather has been making the news even more than normal during 2011 so let's take a look at what's been going on here in our bit of Milton Keynes.

### Rainfall

Rainfall was about average during January and February but March, April and May were extremely dry with only 14mm rather than a typical 115mm. June to September rainfall was again average for the time of year but October was very dry with only one third of what we would normally expect. So to date this year we are well below average and this follows on from a dry 2010 so the accumulated shortfall is significant.

### Temperature

After a very cold couple of months at the end of last year we have been warm since then but with no really exceptional temperatures.

The lowest temperature was minus 4.3°C on the 8<sup>th</sup> of March and the hottest day was on the 27<sup>th</sup> of June at 29.4°C. The general impression seems to be that this

summer was not very good but in fact it has been pretty average.

We have not had any major wind events with the strongest gusts around 30mph during early February.

Although it has been a warm year this is mainly due to nights being less cold, so we tend not to notice it.

### The Coming Winter?

What do the next three months have in store for us? Truth is we do not have any scientific way to make predictions more than 5 to 7 days ahead. The ingredient for a cold spell is for our weather to come at us from an Easterly direction. North can be cold but unless an embedded polar low sweeps down we do not get much snow. A wind from the NE will bring snow to the East coast first, then inland to us depending on how strong the wind is. An East wind is very cold and can bring much snow especially if there is a battle with warm Atlantic air, but if the warmer air wins it will turn to rain, quite a common event. If however the cold air wins we can have extreme weather as we did in 1947, 1963 and to a lesser extent, the past two winters. Well if you really want me to make a guess I would say a colder December with some snow mainly in the form of showers early on then lots of snow at the end of Dec and into Jan, but I cannot offer any logic as to why I think this and I will most probably be totally wrong, let's see.

Dave Edmonds

# Community Centre Information

## SHENLEY BROOK END

**Shenley Brook End Community Centre**  
Egerton Gate, Shenley Brook End.

Telephone for bookings:  
Call 01908 649434

**Regular Users of the Centre**

- ◆ Children's Dance Classes
- ◆ Christian Fellowship (Thursday mornings)
- ◆ Fusion after school club ◆ Karate for Children
- ◆ Weightwatchers ◆ Sugar Guild
- ◆ Shenley Stitchers (Cross-stitch)

### Shenley Brook End Village Hall

Church End Road, Shenley Brook End

Telephone for bookings:

Call Margaret on 01908 521530  
**Regular Users of the Centre**

- ◆ 'Drop In' Meetings Mondays from 2pm - 4pm

- ◆ Pilates with April 01908 550270 Monday 7.30pm - 8.30pm

- ◆ Yoga with Katie 6-7pm beginners, 7:30-9:00 others

- ◆ Musical Monkeys Wednesday 10am 11am

- ◆ Little Acorns Group Tuesday mornings 9.30 - 11.30

- ◆ Acorns Toddler Group 9:30-11:30 Thursday in term time

- ◆ Bingo 2:00pm - 3.30pm Thursdays

- ◆ Urban Scouts Wednesday 5:00pm - 8:00pm

- ◆ Mini Strikers Wed. 12:30 - 2pm Fri. 3pm - 5pm

- ◆ Thistle Scottish Dance Club Wednesday 8pm-10pm

## NORTH FURZTON

**Ridgeway Community Centre**  
Dulverton Drive, North Furzton

Telephone for bookings:  
Call Mrs Luxon on 01908 503974

**Regular Users of the Centre**

- ◆ Beavers & Cubs ◆ Geological Society

- ◆ Maths & English Clubs

- ◆ Naiken System

- ◆ Over 60s Keep Fit & Line Dancing

- ◆ Rosemary Conley Fitness & Diet

- ◆ Square Dancing ◆ Scottish Dance

- ◆ Taekwondo

- ◆ Furzton Tots Pre-school

## SOUTH FURZTON

**Community Centre**  
Blackmoor Gate, Furzton.

Telephone for bookings:  
Call Jo Fasolo on 07739 800840

**Regular Users of the Centre**

- ◆ Brownies ◆ Dance Group

- ◆ Fitness & Self-defence

- ◆ Healing Group

- ◆ Mums & Tots ◆ Nifty 60s

- ◆ Red Dragon Karate

## EMERSON VALLEY SOUTH

**River Valley Centre**  
Whitehorse Drive, Emerson Valley

Telephone for bookings:  
Call Lyn on 01908 367329  
**Regular Users of the Centre**

- ◆ Playgroup (Pre-School)

- ◆ Rainbows ◆ Brownies ◆ Guides

- ◆ Parent and Toddler

- ◆ Weightwatchers ◆ Slimming World

- ◆ Mini-Strikers ◆ Little Ninjas/Taekwondo

- ◆ Sunday Mornings Church Meeting

## EMERSON VALLEY NORTH

**Emerson Valley Community Centre**  
Roeburn Crescent, Emerson Valley

Telephone for bookings:  
Call Lyn on 01908 367329  
**Regular Users of the Centre**

- ◆ Howe Park Scout Group

- ◆ Ducklings Pre-school

- ◆ Line Dancing

- ◆ Spanish & French Lessons

- ◆ Mini Strikers ◆ Martial Arts

- ◆ Weightwatchers ◆ Yoga

## SHENLEY LODGE

**Shenley Lodge Meeting Place**  
Faraday Drive, Shenley Lodge

Telephone For bookings:  
Call Wendy on 07505 900686

**Regular Users of the Centre**

- ◆ Bosom Pals

- ◆ Slimdance

- ◆ Shenley Lodge Pre-School

- ◆ Shenley Christian Fellowship

- ◆ Reflection - Meditation Group

## OXLEY PARK

**Oxley Park Community Centre**  
Redgrave Drive, Oxley Park

Telephone for bookings:  
Call 01908 524482

**Regular Users of the Centre**

- ◆ Little Owls Sure Start Centre

- ◆ Kingsmead Pre-school

- ◆ Kingsmead & Oxley Park Toddler Group

- ◆ Ziggy After School Group

- ◆ Cub Scouts & Brownies

- ◆ Ragdolly Annas

- ◆ Al Muminaat (Arabic Classes)

- ◆ Tatty Bumpkins & Baby Bumpkins

- ◆ Beginners Yoga

- ◆ Phoenix Tactical UK (Kick Boxing)

- ◆ Embroiderer's Guild (MK Branch)

- ◆ Beginners Line Dancing

- ◆ Slim Dance - Latin Dancing

- ◆ Various Faith Groups (Ask for details)

- ◆ Families Need Fathers - Support Group

## TATTENHOE

**Tattenhoe Pavilion**  
Holborn Crescent, Tattenhoe.

Telephone for bookings:  
Call 01908 749038

**Regular Users of the Centre**

- ◆ Ahmadmus Muslim Association

- ◆ Cheeky Monkeys Kids Club

- ◆ Ducklings Pre-school

- ◆ EJP Football League

- ◆ MK Seishin Aikido Club

- ◆ Wendy's Aerobics

- ◆ Kathy's Kiddies Musical Melodies

- ◆ Taiyoku Shotokan Karate Club

- ◆ Tattenhoe Parents & Toddlers

- ◆ Tumble Tots

- ◆ Weightwatchers

- ◆ Zumba Fitness Classes

## WESTCROFT

**Westcroft Meeting Place**  
Wimborne Crescent, Westcroft.

Telephone for bookings:  
Call 01908 253154  
or 01908 253334

**Regular Users of the Centre**

- ◆ After School Club (SWASP)

- ◆ Ducklings Pre-school

- ◆ Ismalis Group

- ◆ Jesus Fellowship Church

- ◆ MK Pipe Band

- ◆ MK Society of Artists

- ◆ Weightwatchers

- Alzheimer's Society Support Group



# What's On?

## Furzton Scout Group

Beavers (age 6-8) Mondays 6-7pm  
Cubs (age 8-10) Wednesdays 6.30-8pm  
Scouts (age 10-14) Wednesdays 7-9pm  
Ridgeway Community Centre, Dulverton Drive, North Furzton  
Contact **Ray** on **01908 526463**

## Howe Park Scout Group

Beavers (age 6-8) Mondays 6-7pm  
Cubs (age 8-10) Tuesdays 6.30-8pm  
Westcroft District Centre, Wimborne Crescent  
Scouts (age 10-14) Wednesdays 6.30 - 8.30pm  
Emerson Valley Meeting Place (North), Roeburn Crescent  
Contact **Janette** on **01908 503093** or visit our website:  
<http://howeparkscouts.org.uk>

## Loughton Scout Group

Beavers (age 6-8) Thursdays 5.45-7pm  
Cubs (age 8-10) Wednesdays 6.30-8pm  
Scouts (age 10-14) Thursdays 7-9pm  
Loughton Memorial Hall, Bradwell Road, Loughton  
Contact **Ray** on **01908 526463**

## Football For Fun (6 or 10 a-side, depending on numbers)

Tuesday evenings. 8-9pm. Anyone welcome, male or female, and any skill level, though being able to kick a ball is helpful! You must be 16 or over, but no upper limit! Currently £2.00 per session.  
Shenley Brook End School (Astroturf, all weather pitch)  
More info from **Chris (07773 451678)** or **Matt (07804 098446)**  
Part of the activities organised by Shenley Christian Fellowship.

## Parkside Community Sports & Football Club

Indoor bowls for males & females from 9 upwards on Tuesday evenings 7.00 to 9.00pm  
Fun Football for: for boys and girls from 5 years old and upwards on Wednesday evenings 5.30pm - 7pm. We also run wheelchair football.  
Contact **Chris** on 01908 501658 for details of all activities.

## Thursday Club

Every Thursday afternoon. Shenley Brook End Village Hall 2-3.30pm  
If you enjoy Bingo and meeting new people everybody is welcome, young, old, male or female.

## Fun Language Clubs for 3-9 year old children

### Fun Spanish Clubs with El Club Español

Every Saturday. 11:15-12:15 in Emerson Valley

### Fun French Clubs with Le Club Français

Every Saturday in Emerson Valley 10-11

Contact **Helen** by email on: [helenjones2005@yahoo.co.uk](mailto:helenjones2005@yahoo.co.uk) or phone **07759287206** for further information and book your child's free trial. Website: [www.lcclubs.com/helenjones](http://www.lcclubs.com/helenjones)

## Loughton and Shenley Over 60's Club

Every Wednesday afternoon. 2.15-5.00pm  
Loughton Memorial Hall, Bradwell Road, Loughton  
New members always welcome.  
Call **Sylvia** on **01908 569165** for information

## Shenley Christian Fellowship

Every Sunday morning. - 10.30am-12noon  
Creche available Shenley Brook End School, 6th Form Centre  
Every Sunday evening - 6.30-7.30pm. - Shenley Lodge Meeting Place  
Call **Chris** on **504299** or **Lynn** on **524742** for information.  
**Little Acorns Group:** For babies & their carers. Tuesday mornings 9:30 am - 12:30 at SBE Village Hall. No charge.

## Point of Contact for Allotment Matters

If you would like to apply for an allotment or if you have any queries or ideas regarding your allotment please contact:

[carole.mcmillan@shenleybrookend-pc.gov.uk](mailto:carole.mcmillan@shenleybrookend-pc.gov.uk)

**Acorns Toddler Group:** For 0 - 5 year olds with their carers. No charge. Every Thursday, in term time, 9.30 - 11.30. SBE Village Hall.  
**'Drop In':** Call in for a 'cuppa', chat & relax, or join in with one of our activities. Every Monday, 2pm to 4pm at SBE Village Hall No charge.  
Website: [www.scf-mk.org.uk](http://www.scf-mk.org.uk) email: [lynn.mephram@scf-mk.org.uk](mailto:lynn.mephram@scf-mk.org.uk)

## Shenleys and Loughton Women's Institute

2nd. Tuesday afternoon of every month except August - 2.30pm  
Loughton Memorial Hall, Bradwell Road, Loughton  
New members always welcome. For more information:  
Call **Rosemary** on **01908 521725** or **Barbara** on **01908 503885**

## Shape Changers Square Dance Club

We are a new club formed to take beginners through the basic steps of square dancing. We meet on Thursday evenings 8 - 10pm at Ridgeway Community Centre, Furzton.

All are welcome £4 per session  
Contact **Susie** on **01280 816940**

## Rotaract Club of Milton Keynes

Rural Social and Community Group for 18-30 year olds  
New members always welcome  
1st and 3rd Monday of every month. Venues vary  
Contact: **Daren** on **07717 154803** or **Wendy** on **07974 821370**  
Website: [www.10.brinkster.com/mkrotaract](http://www.10.brinkster.com/mkrotaract)

## Zumba Fitness Classes

Every Tuesday evening 7:30 - 8:30 at Tattenhoe Pavilion.  
Every Thursday evening 7:20 - 8:10 & 8.15 - 9.10 Oxley Park School.  
Every Saturday morning 10.15 - 11.15 at Oxley Park Primary School  
Contact **Yasmin** on **07966488727** or email [yasmin@zumba.uk.com](mailto:yasmin@zumba.uk.com) for more information.

## Alzheimer's Society Support Group

Information support & advice for anyone affected by dementia -  
Westcroft Health Centre every other Tuesday 14:00 = 15:30  
Contact **Dee Cope** **01908 261750** for information or email [dee.cope@alzheimers.org.uk](mailto:dee.cope@alzheimers.org.uk)

To publicise an event in our **FREE 'What's On' listing**,  
send details to the address on page 2,  
or e-mail: [clerk@shenleybrookend-pc.gov.uk](mailto:clerk@shenleybrookend-pc.gov.uk)

## ♪ Milton Keynes Chorale ♪

Invites you to a Christmas Concert at 8pm on  
17th December at Christ the Cornerstone.  
There will be fun, mince pies and mulled wine as  
well as festive music for choir & audience  
Details on [www.mkchorale.org.uk](http://www.mkchorale.org.uk)  
or ring **01908617697**

Don't forget that the Trades Directory is still available  
on the Parish website along with much more news and  
information at: [www.shenleybrookend-pc.gov.uk](http://www.shenleybrookend-pc.gov.uk).

## Pink Sacks

A Reminder that pink sacks are available for  
collection at the Parish Office for anyone who wants  
them. It's a good idea to call 521538 first to make  
sure staff are available.



## Howe Park School Celebrates 10 Successful Years

Howe Park School recently celebrated ten very successful years since its opening in September 2001. The school was delighted that former staff and colleagues joined in the fun of a special assembly led by the children. The school's mission statement 'Guiding small steps to lifelong learning' was the theme for the assembly, with children and visitors recording their memories on special footsteps for display in the school's hall.

A very special visitor on this occasion was the school's former headteacher, Mr Alan Killman who shared his memories of the school's early days. Mr Killman then joined the school's current headteacher, Mrs Ros Jacklin in cutting the special celebratory cake.



Following the assembly, visitors were invited to meet the children in their classrooms as they completed their 'memory boxes' recording their memories of special times at the school and their hopes for the future.



In addition to recording their memories, the children had also worked with artists making models of the animals that the school's classes are named after- fox, owl, squirrel, dormouse, badger, hedgehog and rabbit.

As the celebrations were completed, the enjoyment can be summed up in the words of one of the visitors - "So many memories, but all happy and in ten years the school is still as fresh and welcoming".

Howe Park School would also like to wish 'Community News' every success in the future as it too celebrates a very special date – its fiftieth issue.

The two celebrations help us all to remember the value of our

communities both large and small and how they can make such a positive contribution to the lives of those within them.

## Howe Park District Neighbourhood Action Group

Howe Park NAG covers the areas of Shenley Brook End, Emerson Valley, Tattenhoe, Westcroft, Kingsmead, Snelshall and Tattenhoe Park. We meet every 6 weeks in the Parish Offices at 7:30pm. Our future meeting dates are Thursday 8<sup>th</sup> Dec, 19<sup>th</sup> Jan and 1<sup>st</sup> March.

Our aim is to identify problems affecting residents living in our area and find solutions. We work with Thames Valley Police, Milton Keynes Council and the Parish Council to sort out problems such as parking, litter and graffiti and anti-social behaviour.

Over the past few months we have looked at problems around Tattenhoe Pavilion and Shenley Brook End local centre. We would welcome new members, so if you are interested or have a problem you think we might be able to help you with, do please come along or email us at: [clerk@shenleybrookend-pc.gov.uk](mailto:clerk@shenleybrookend-pc.gov.uk).

I look forward to welcoming you to one of our meetings.

David Edmonds – Chair



**Community News** is published by Shenley Brook End & Tattenhoe Parish Council.

6 Wimborne Crescent, Westcroft District Centre, Milton Keynes, MK4 4DE. Tel: 01908 521538

Editor K Thomas

Circulation 10,000 to households within the Parish of Shenley Brook End & Tattenhoe.

